



# FUNDED PROJECTS

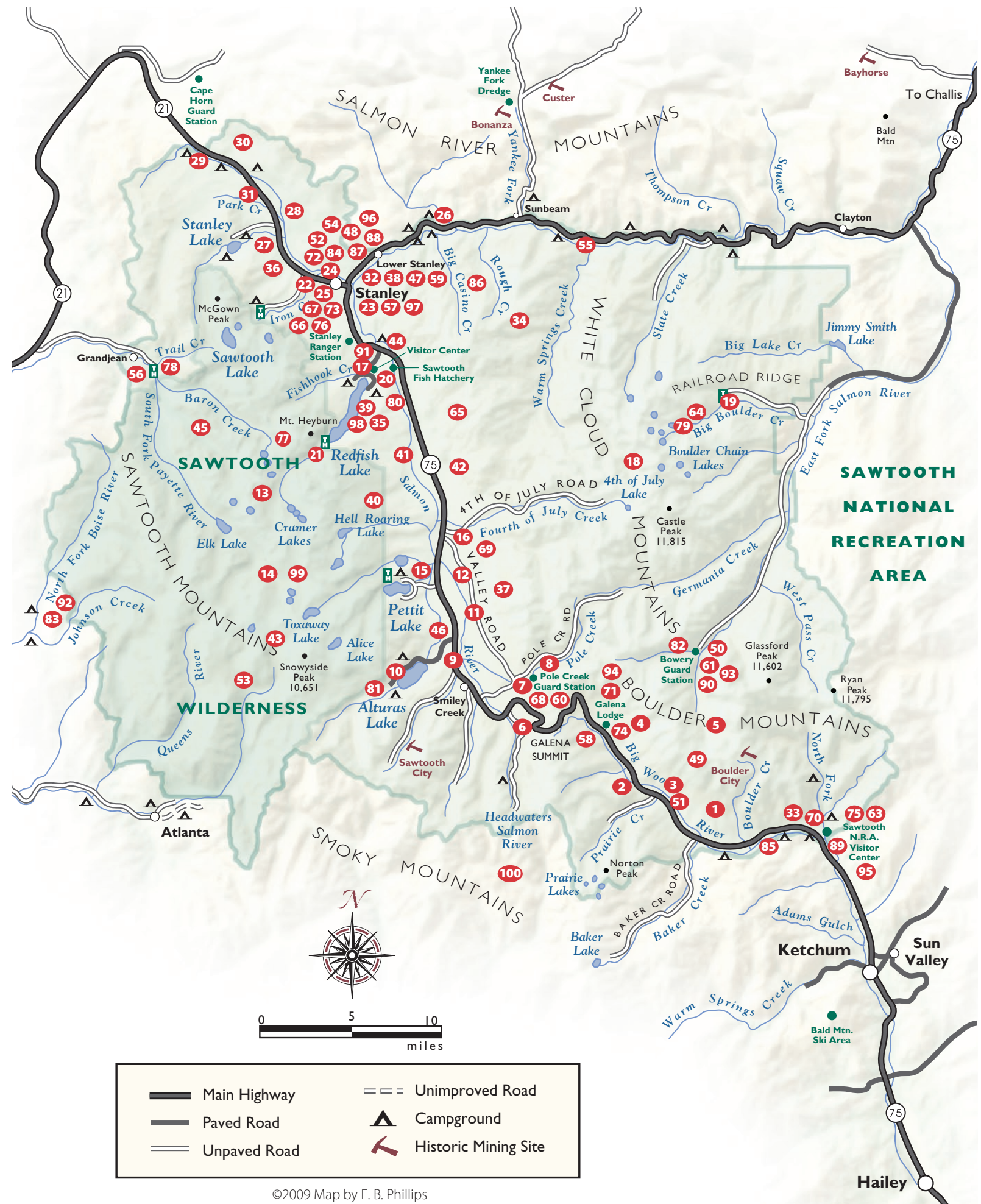
## 1997 TO PRESENT - MAY 2009

### SAWTOOTH NATIONAL RECREATION AREA

1. Wood River Winter Recreation Coalition use plan
2. Maintenance of Harriman Trail
3. High powered telescopes at two mountain goat viewing sites
4. Interpretive signs at Senate Creek
5. Trail maintenance in the Boulder Mountains
6. Refurbishment of the Galena Overlook Visitors Center
7. Construction of log worm fence at historic Pole Creek Guard Station
8. Interpretive signs at Pole Creek Guard Station
9. Litter pickup on Highway 75
10. Reconstruction of wood foot bridge at Alturas Lake
11. Installation of wildlife friendly fences
12. Sawtooth Community Winter Recreation Partnership use plan
13. Leave No Trace "backcountry education"
14. Trail maintenance in the Sawtooth Mountains
15. Removal of deactivated electrical power poles
16. Painting of the Fourth of July Work Center
17. Interpretive programs at Redfish Lake Visitors Center
18. Trail maintenance in the While Cloud Mountains
19. Trailhead and trail signs in the White Cloud Mountains
20. Reconstruction of outdoor amphitheater at Redfish Lake VC
21. Maintenance of the Redfish Lake Creek Trailhead
22. Sawtooth Collaborative Forum
23. Sawtooth "Crash and Family Fun Fair"
24. Equipment for the Stanley Fire & Technical Rescue Unit
25. Sawtooth Valley secondary education
26. Toilets at Mormon Bend Campground
27. Rebuilding of log worm fence on public land
28. Facilitation of conservation easement
29. Annual litter pickup on Highway 21
30. Snowmobile grooming equipment
31. Nordic ski grooming equipment
32. Equipment & training for Salmon River Emergency Clinic
33. SNRA Avalanche Center recreation reports
34. Restoration of historic Chase Lookout
35. Refurbishment of Redfish Lake boat access
36. Emergency equipment for Custer County Search & Rescue
37. Eradication of noxious weeds
38. Equipment for Sawtooth Valley Rural Fire Department
39. Sandy Beach boat launch resurfacing
40. Landmark Volunteers
41. Landownership booklet
42. Volunteer Coordinator
43. Mounted Wilderness/Backcountry Ranger
44. Information kiosks
45. All-weather Wilderness maps
46. Nordic ski trail grooming
47. Stanley Police emergency medical equipment
48. Sawtooth Valley Rural Fire Department emergency equipment
49. Aerial Mountain Goat survey
50. Bowery Creek Guard Station volunteer

51. Redo Mountain Goat interpretive sign at Billy's Bridge
52. City of Stanley visitor services
53. 40th Anniversary Wilderness Act commemoration
54. Equipment for Stanley Emergency Medical Technicians
55. Whitewater safety information for Custer County Sheriff
56. Grandjean trailhead repairs and improvements
57. City of Stanley "Corners Project"
58. Sawtooth Ski Club Ski-Doo for grooming trails in SNRA
59. Sawtooth Search & Rescue Pagers and Response Packs
60. Pole Creek Guard Station repair
61. Support for volunteers at Bowery Guard Station
62. Support for Volunteer programs on the SNRA
63. Support for Interpretive & Educational programs throughout the SNRA
64. Rerouting of Big Boulder Ck Trail in Gunsight Creek area
65. Trail Maintenance in the SNRA
66. Sponsorship of the Sawtooth Music Festival in Stanley
67. New well for Fire Stations and Stanley Community Building
68. Support for for volunteer at Pole Creek
69. Support for for volunteer at Sawtooth wCorral
70. Campground brochures for SNRA
71. Daily avalanche advisory sponsorship
72. Funds for historic preservation of Doc Day Cabin
73. Sawtooth Search & Rescue portable radios, truck radio and generator
74. Reprint of Blaine County maps/guides for Skiers
75. Winter Ranger 2006-2007
76. Sponsorship of the Sawtooth Music Festival in Stanley
77. Mounted Wilderness/Backcountry Ranger
78. Trail bridge over Trail Creek
79. Walker Lake Trail Repair
80. Interpretive Programs for the SNRA
81. Alturas Creek Bridge
82. Support for volunteers at Bowery Guard Station
83. NSA Graham Area Trails Maintenance
84. NSA Doc Day Cabin fence construction
85. Wood River Trails
86. Improving Big Casino Creek Trail
87. Replace tracks on snowmobile trail groomer
88. Repair and restore Ice House
89. SNRA Avalanche Center recreation reports
- 90.\* Bowery Guard Station Volunteer Support
- 91.\* Ed-Venture Educational Program
- 92.\* Graham Area Trails
- 93.\* Bowery Guard Station and Big Creek Fences
- 94.\* Winter Recreational Ranger
- 95.\* Support for Wildlands Education AmeriCorps
- 96.\* Sawtooth Forum and Lecture Series (SIHA)
- 97.\* Visitor Signs Stanley
- 98.\* Point Beach Interpretative Signs
- 99.\* Trail Pack and Saddle Stock
- 100.\* West Fork Big Smoky Trail Reconstruction

(\* Approved projects, not yet funded.)



©2009 Map by E. B. Phillips